

GENERAL NOTES

*All taking down and removal to be carefully undertaken in accordance with Conservation Specifications by David Stalley Conservation Architects.

*Surviving original multi-pane sash windows to link building to be carefully conserved, retaining single panes of glass in accordance with Conservation Specifications by David Stalley Conservation Architects.

*Non-original 20th Century sash windows to Seminary to be spliced where beads and half cills are damaged. New elongated double glazed units to be fitted into existing sashes. All in accordance with detail drawings showing glazing bar profile impact and Conservation Specifications by David Stalley Conservation Architects.

*All services to Seminary to reuse existing routes where possible with any new routes and installations to be carried out in accordance with Conservation Specifications by David Stalley Conservation Architects.

*Minor repairs to leaded and stained glass in Assembly Hall are limited to repair of opening sections and glass replacement where panes are broken. No storm or secondary glazing proposed. All to be carried out in accordance with Conservation Specifications by David Stalley Conservation Architects.

*Stained glass over front entrance to chapel is set in a timber frame and is to be carefully removed to agreed location in accordance with Conservation Specifications by David Stalley Conservation Architects.

*Slate roofs to Seminary and Chapel to be restored using Blue Bangor slate and stepped lead valleys in accordance with Conservation Specifications by David Stalley Conservation Architects.

*All cast iron rainwater goods to be retained and renewed with any replacements where goods are beyond repair to be in cast iron. All in accordance with Conservation Specifications by David Stalley Conservation Architects.

*Render to be lightly cleaned with dilute bicarbonate in accordance with Conservation Specifications by David Stalley Conservation Architects.

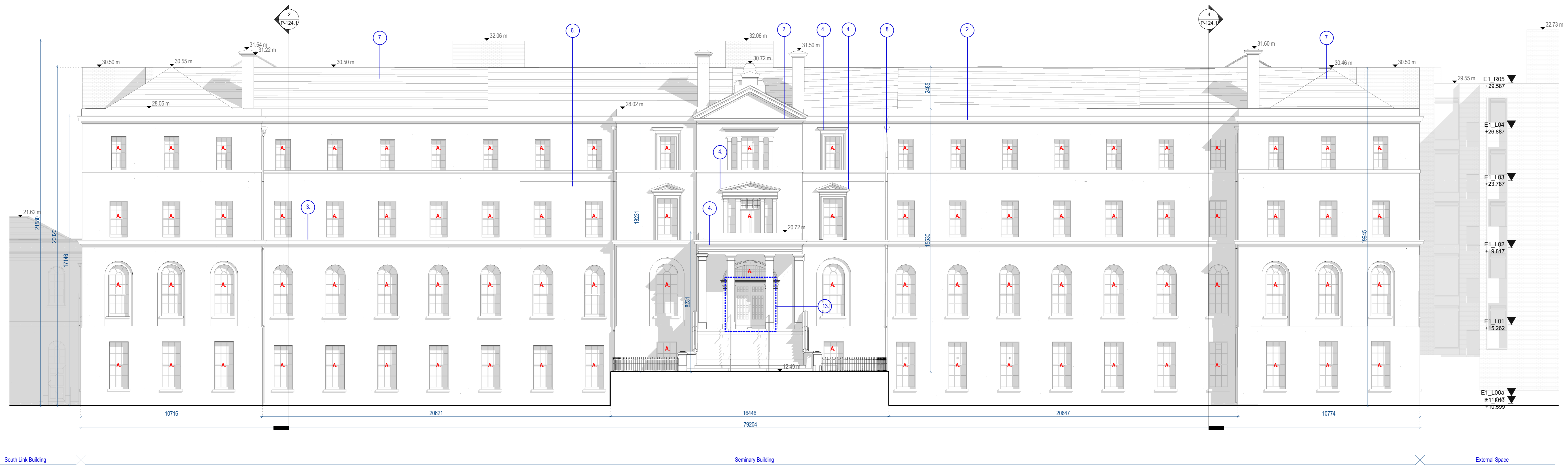
*Limestone strings and cills to be carefully cleaned using Doff or similar steam cleaning - no abrasive or chemical cleaning. All in accordance with Conservation Specifications by David Stalley Conservation Architects.

*Granite cills, copings etc to be carefully cleaned using a light calcium carbonate abrasive in accordance with Conservation Specifications by David Stalley Conservation Architects.

*Wholesale repointing is not required and localized pointing where necessary will be carried out using a lime (NHLS) mortar and aggregate and lime mix to match existing bedding mortar tone and texture. All in accordance with Conservation Specifications by David Stalley Conservation Architects.

KEY - WINDOWS

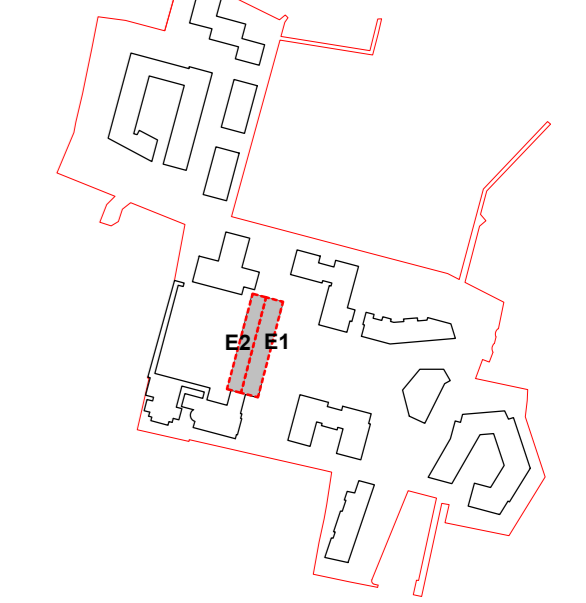
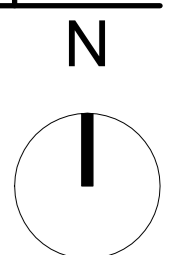
- A. EXISTING WINDOW RETAINED
- B. EXISTING WINDOW REMOVED
- C. EXISTING WINDOW REPLACED
- D. NEW WINDOW



1 Seminary Building - Proposed East Elevation
Scale: 1:100

ALL DIMENSIONS TO BE CHECKED ON SITE
NO DIMENSIONS TO BE SCALED FROM THIS DRAWING
DRAWINGS TO BE READ IN CONJUNCTION WITH RELEVANT CONSULTANT DRAWINGS

A0



| REV | DATE | DESCRIPTION | DT | IB | DRN |
|-----|--------|---|----|----|-----|
| P2 | APR 21 | Issued for Planning | | | SP |
| P1 | NOV 20 | Issued for Pre-Application Consultation | | | IB |

ISSUED FOR PLANNING APPROVAL

APPLICANT NAME

CWTC Multi Family ICAV acting on behalf of the sub-kind DBTR DRI Fund

PROJECT NAME

166, Cross College, BPO

LOCATION

Holy Cross College, Carriffe Road, Dublin 3 and Drumcondra Road Lower, Drumcondra, Dublin 9

DRAWING

Seminary Building - Proposed East Elevation

PROJECT NUMBER

CLN-MCM-00-ZZ-MS-A-0003

DATE

06/02/20

SCALE @ A0

As indicated

DRAWN/CHECKED

IB/ROC

STATUS CODE

A1

CLN-MCM-E1-ZZ-DR-A-P-110

REVISION

P2

Henry J Lyons

Architecture + Interiors

+353 1 889 3333

henryjlyons.com

51-54 Pearse Street

Dublin D02 X466

